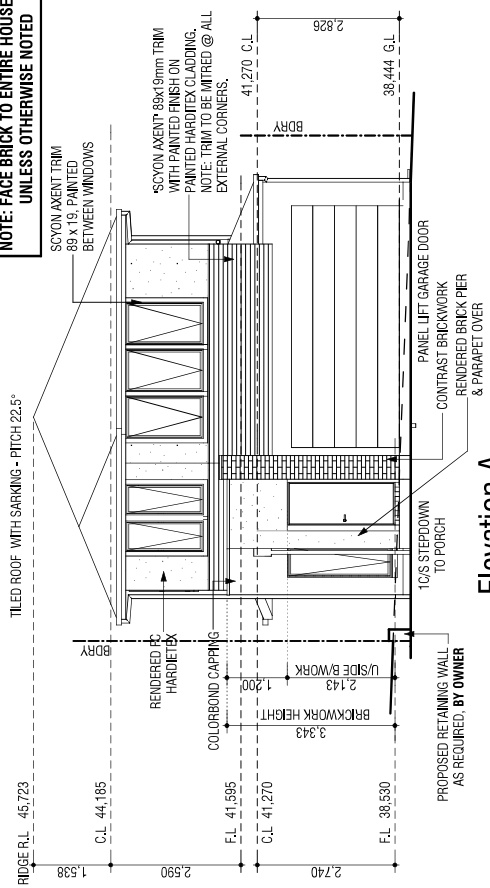
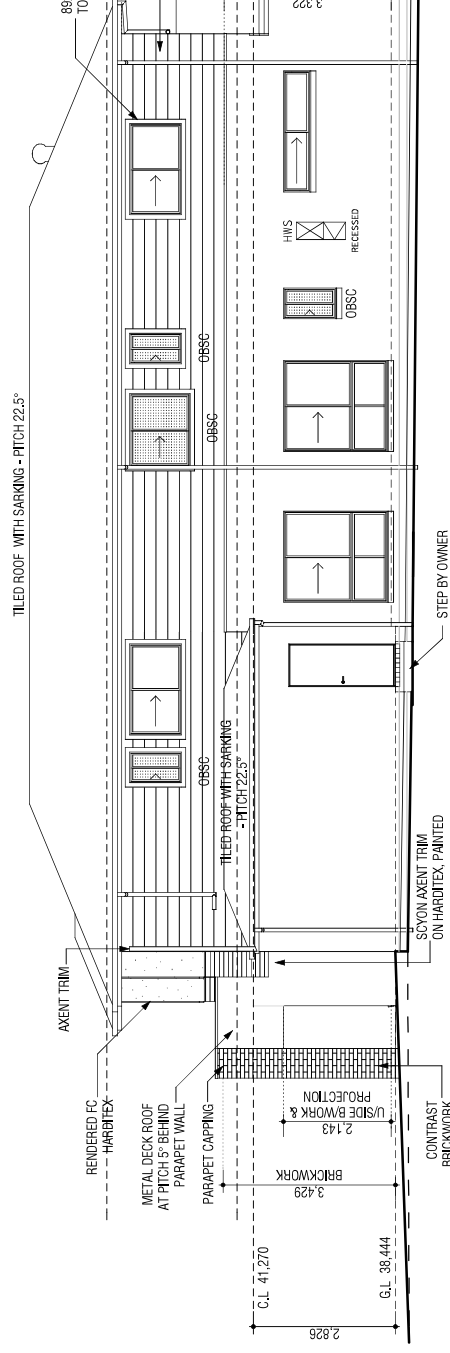


WORK SAFELY

NOTE: FACE BRICK TO ENTIRE HOUSE UNLESS OTHERWISE NOTED



Elevation A



Elevation B

- GENERAL NOTES:-**
- WET AREAS IN ACCORDANCE WITH BCA REQUIREMENTS
 - STEPS: TRE-60-250MM, RISE-150MM
 - BALLUSTRADE: AT STEPS-855MM HIGH AT LANDINGS-1000MM HIGH
 - WRITTEN DIMENSIONS WILL TAKE PRECEDENCE OVER SCALE.
 - UNLESS OTHERWISE SHOWN, HINGED DOORS TO BE 800-WIDE.
 - UNLESS OTHERWISE INDICATED ALL WALL DIMENSIONS ARE:
 - EXTERNAL 240mm = 110 BRICK + 40 CAVITY + 40 STU
 - INTERNAL 90mm STU
 - REF. F.R. W.M AND C.D. SYMBOLS INDICATE POSITION ONLY
 - EXPANSION JOINTS ARE TO BE PROVIDED AS SHOWN

- WC DOOR REMOVABLE WHERE REQUIRED AND FITTED WITH LIFT OFF HINGES IN ACCORDANCE WITH BCA AMENDMENT 3 PART 3.8.3.3
- MECHANICAL VENTILATION TO OUTSIDE AIR PROVIDED WHERE REQUIRED AND IN ACCORDANCE WITH B.C.A. 7.2.4.5
- WINDOW GLASSING CODES:
 - [E.V.] - EAVE VENT
 - [C.F.] - COMFORT PLUS
 - [O.B.] - OBSERVERS
 - [D.B.] - DOUBLE GLAZED (D.T.) - COMERTONE
 - [S.G.] - SINGLE CLEAR LOW EMISSIVITY GLASS
 - [D.L.] - DOUBLE CLEAR LOW EMISSIVITY GLASS
 - [S.] - SMART GLASS SP-10 CLEAR
- WINDOW GLASSING CODES:
 - [E.V.] - EAVE VENT
 - [C.F.] - COMFORT PLUS
 - [O.B.] - OBSERVERS
 - [D.B.] - DOUBLE GLAZED (D.T.) - COMERTONE
 - [S.G.] - SINGLE CLEAR LOW EMISSIVITY GLASS
 - [D.L.] - DOUBLE CLEAR LOW EMISSIVITY GLASS
 - [S.] - SMART GLASS SP-10 CLEAR
- UP - DOWNPIPE CONNECTED TO STURMIMATER
- UP - DOWNPIPE CONNECTED TO URN/WATER TANK
- UP - LOAD BEARING WALL

DIMENSION SHOWN ON PLAN ARE TAKEN FROM WALL FRAME, NOT FINISHED PLASTER

<p>NEW HOME CONTRACT 1</p> <p>RESIDENCE FOR: Kim Sung Hee Lot A., 33 Sharp Street, Belmont NSW 2192</p>		<p>External Elevations</p> <p>Robertson 255</p>		<p>Corella</p>	
<p>DESIGN ID: N.S.W.</p> <p>SPECIFICATION: N.S.W.</p> <p>S.I. No. ISSUE</p> <p>GEN. ISSUE</p> <p>DATE: 06/22/21</p>		<p>CONTRACT No: 186670</p> <p>NHP NHC</p> <p>MASTER Nk 13,12,21</p> <p>ISSUE Dg 25,01,22</p>		<p>SCALE: 1:100</p> <p>SHEET No: 03-1</p> <p>HAND: 6 of 17</p>	
<p>Burbank Australia (NSW Pty Ltd) ph: (02) 9538 0355 fx: (02) 9528 0222</p> <p>Burbank #brbankliveonline</p> <p>ABN: 68 610 822 774, ACR: 610 822 770, BL: 235627C</p>		<p>Burbank</p>		<p>N.S.W.</p>	

